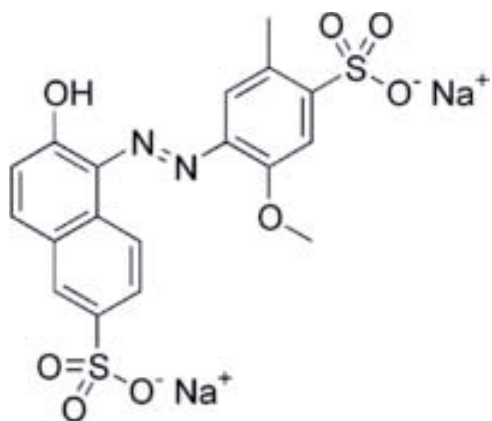
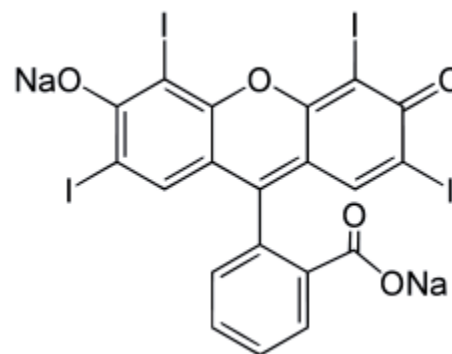


Food Dyes

Dyes

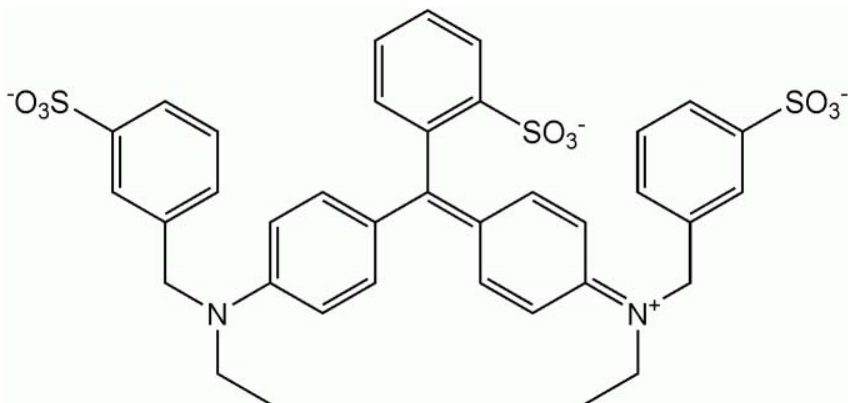


- Red 40
- Allura Red
- 496.42 g/mol
- C₁₈H₁₄N₂Na₂O₈S₂

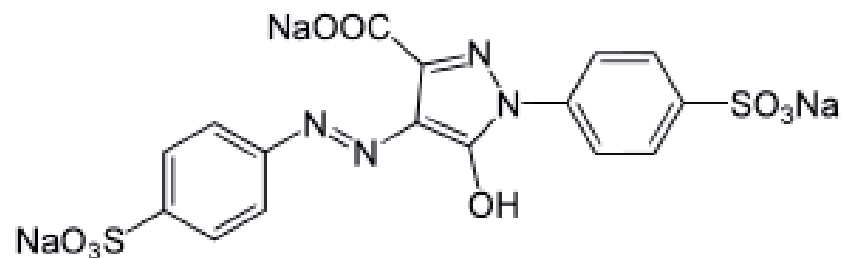


- Red 3
- Erythrosine
- 879.86 g/mol
- C₂₀H₆I₄Na₂O₅

Dyes



- Blue 1
- Brilliant Blue
- $C_{37}H_{34}N_2Na_2O_9S_3$



- Yellow 5
- Tartrazine
- 534.3 g/mol
- $C_{16}H_9N_4Na_3O_9S_2$

MIT OpenCourseWare
<https://ocw.mit.edu>

2.674 / 2.675 Micro/Nano Engineering Laboratory
Spring 2016

For information about citing these materials or our Terms of Use, visit: <https://ocw.mit.edu/terms>.