

MIT OpenCourseWare
<http://ocw.mit.edu>

6.641 Electromagnetic Fields, Forces, and Motion, Spring 2005

Please use the following citation format:

Markus Zahn, *6.641 Electromagnetic Fields, Forces, and Motion, Spring 2005*. (Massachusetts Institute of Technology: MIT OpenCourseWare).
<http://ocw.mit.edu> (accessed MM DD, YYYY). License: Creative Commons Attribution-Noncommercial-Share Alike.

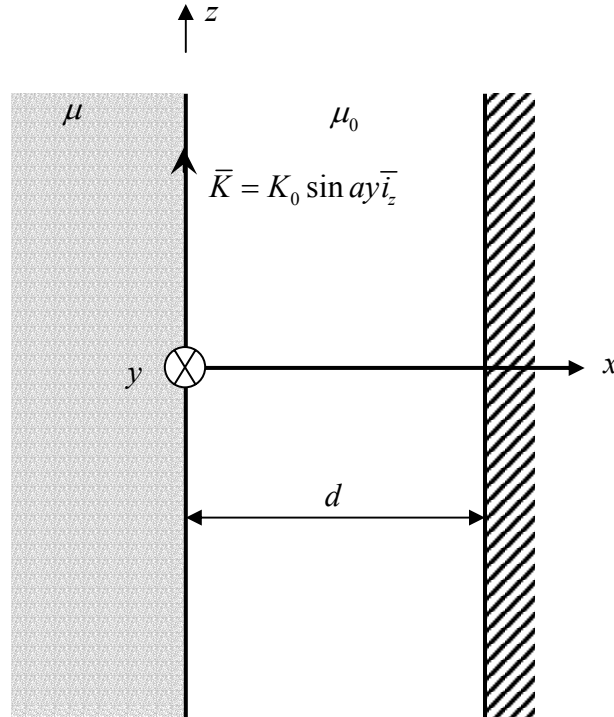
Note: Please use the actual date you accessed this material in your citation.

For more information about citing these materials or our Terms of Use, visit:
<http://ocw.mit.edu/terms>

Massachusetts Institute of Technology
 Department of Electrical Engineering and Computer Science
 6.641 Electromagnetic Fields, Forces, and Motion
 Quiz 1
 March 17, 2004

You are allowed to prepare a one page (both sides) formula sheet that you can use during Quiz 1.

Problem 1



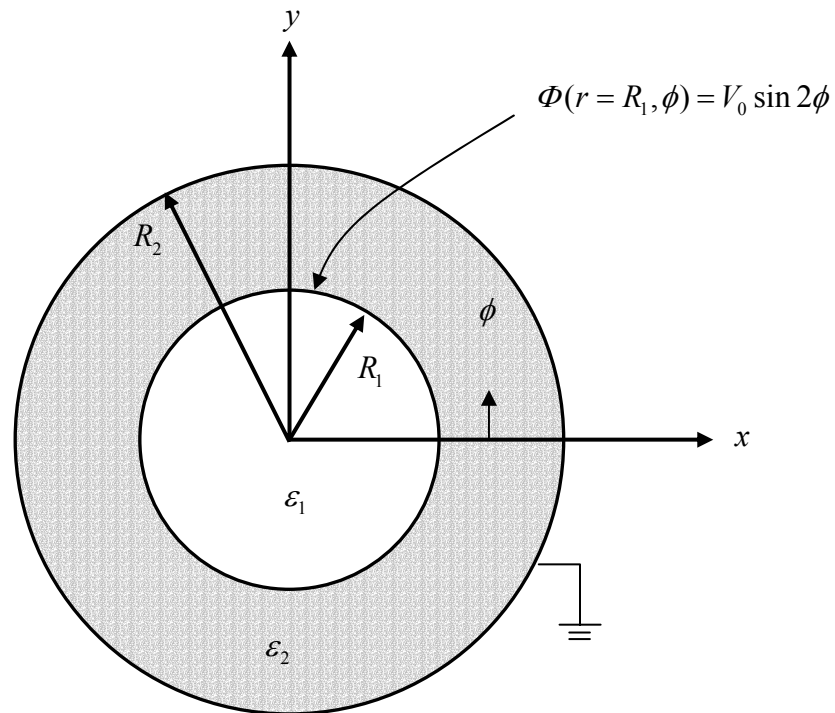
A current sheet $\vec{K} = K_0 \sin ay \vec{i}_z$ is placed at $x=0$ between magnetic material with permeability μ and free space with magnetic permeability μ_0 where $a > 0$. A perfectly conducting plane of infinite extent in the y and z directions is placed at $x=d$. Because there are no volume currents for $x < 0$ and $0 < x < d$, in these regions a scalar potential can be defined such that $\vec{H} = -\nabla\chi$. Assume that there are no field dependencies on the z coordinate.

- a) What is the general form of the solution for $\chi(x, y)$ in the regions $x < 0$ and $0 < x < d$.
- b) What boundary conditions must be satisfied?
- c) Solve for $\chi(x, y)$ for $x < 0$ and $0 < x < d$.

Hint: To minimize algebraic complexity, think about the best way to write the general form of the solution for $\chi(x, y)$ to automatically satisfy one of the boundary conditions for part (b).

- d) What is the surface current that flows on the $x=d$ interface?
- e) What is the force per unit y - z area on the $x=d$ interface?

Problem 2



An infinitely long cylinder of radius R_1 has the electrostatic potential at $r = R_1$ constrained to be $\Phi(r = R_1, \phi) = V_0 \sin 2\phi$. This cylinder is surrounded by a perfectly conducting cylinder of radius R_2 that is grounded. The dielectric permittivity for $r < R_1$ is ϵ_1 and is ϵ_2 for $R_1 < r < R_2$.

- What is the general form of solution for the electric scalar potential $\Phi(r, \phi)$ for $r < R_1$ and $R_1 < r < R_2$?
- What boundary conditions must be satisfied?
- What is the potential distribution for $r < R_1$ and $R_1 < r < R_2$?
- What are the surface charge distributions at $r = R_1$, and $r = R_2$?