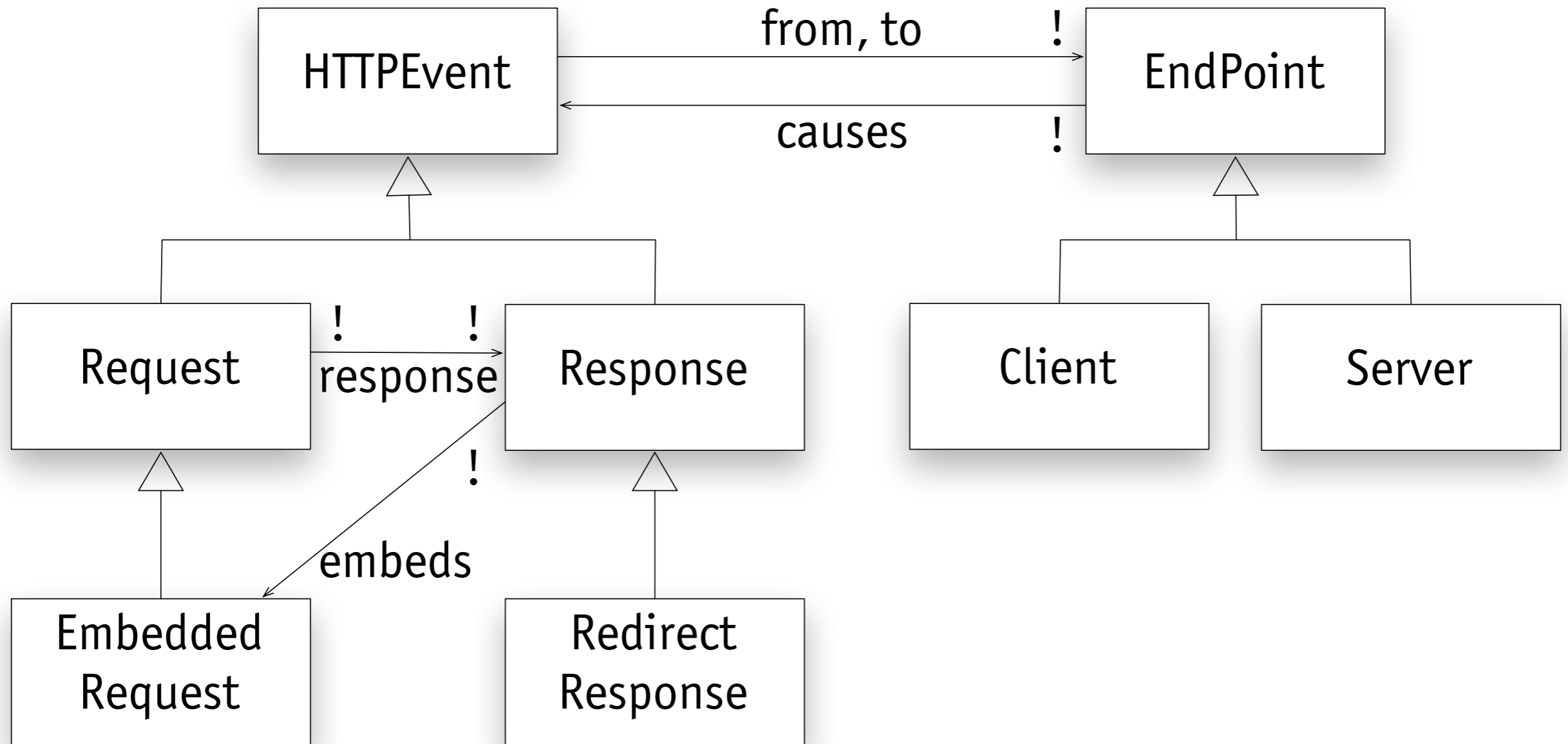


# software studio

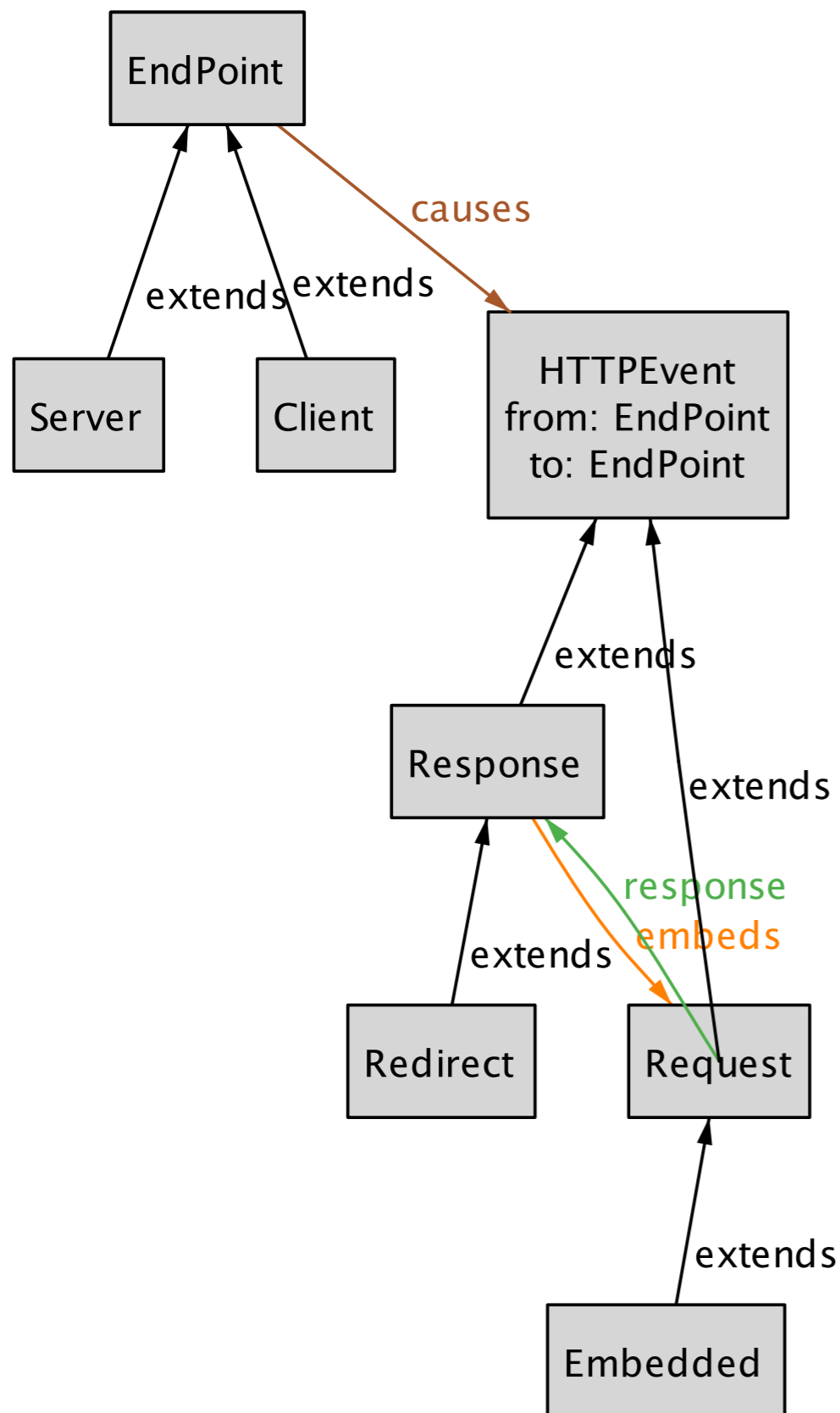
## modelling HTTP

Daniel Jackson

# basic object model for HTTP



# in Alloy



```
abstract sig EndPoint {
    causes: set HTTPEvent
}

sig Client, Server extends EndPoint {}

abstract sig HTTPEvent {
    from, to: EndPoint
}

sig Request extends HTTPEvent {
    response: Response
}

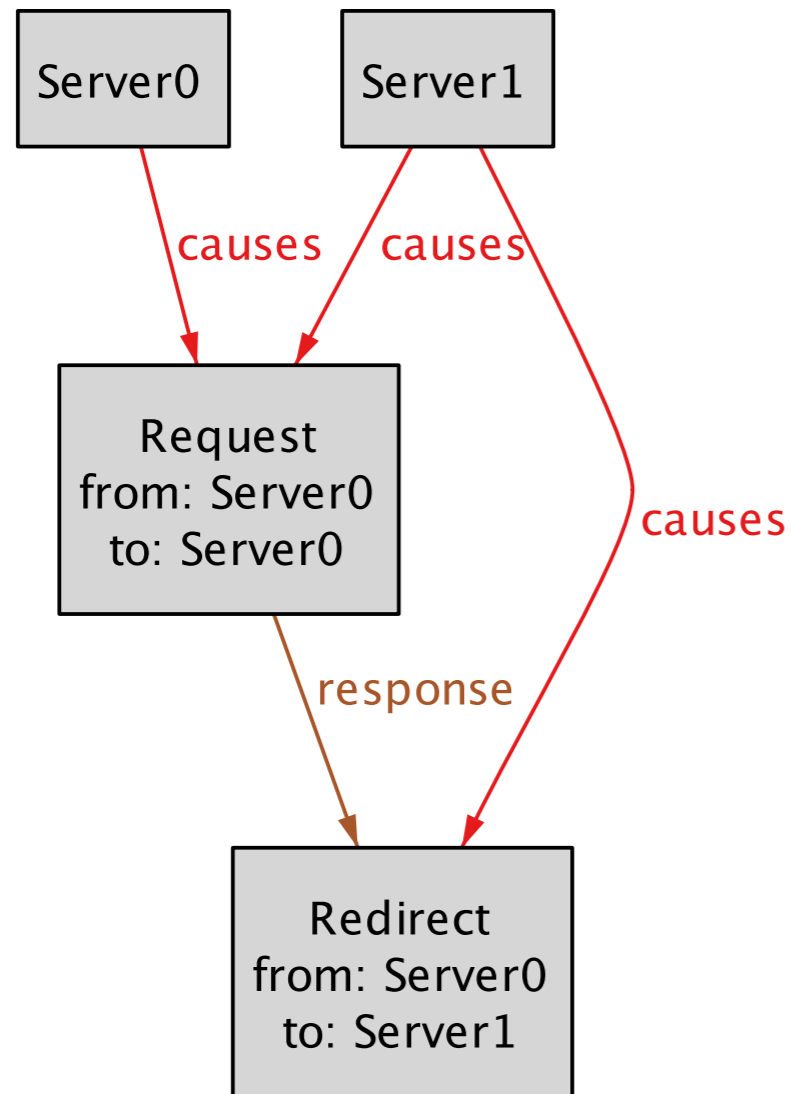
sig Response extends HTTPEvent {
    embeds: set Embedded
}

sig Embedded extends Request {}

sig Redirect extends Response {}

run {some Request and some Response}
```

# show me...



```
abstract sig EndPoint {  
  causes: set HTTPEvent  
}
```

```
sig Client, Server extends EndPoint {}
```

```
abstract sig HTTPEvent {  
  from, to: EndPoint  
}
```

```
sig Request extends HTTPEvent {  
  response: Response  
}
```

```
sig Response extends HTTPEvent {  
  embeds: set Embedded  
}
```

```
sig Embedded extends Request {}
```

```
sig Redirect extends Response {}
```

```
run {some Request and some Response}
```

# adding constraints

```
abstract sig EndPoint { causes: set HTTPEvent }
  { causes = {e: HTTPEvent - Embedded | e.from = this} + causes.embeds }

sig Client, Server extends EndPoint {}

abstract sig HTTPEvent { from, to: EndPoint }

sig Request extends HTTPEvent { response: Response }
  { from in Client and to in Server }

sig Response extends HTTPEvent { embeds: set Embedded }
  { from in Server and to in Client }

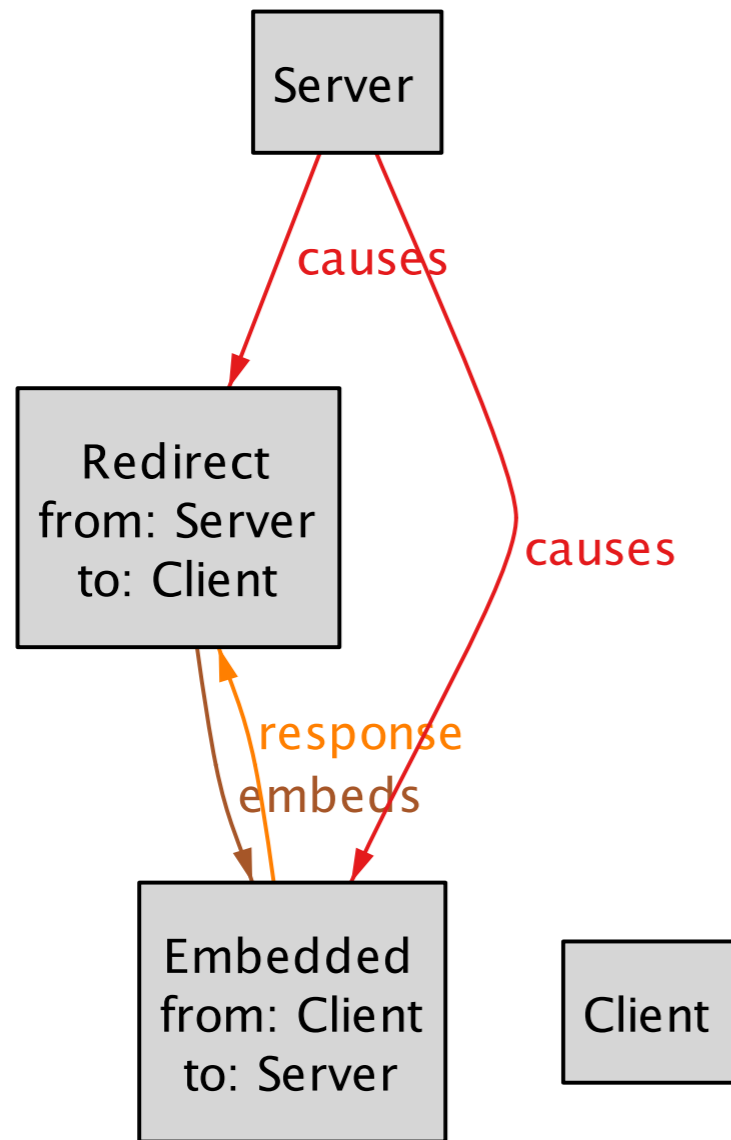
sig Embedded extends Request {}
fact {Embedded = Response.embeds}

sig Redirect extends Response {}

fact RequestResponse {
  response in Request one -> one Response
  all r: Request | r.from = r.response.to and r.to = r.response.from
}

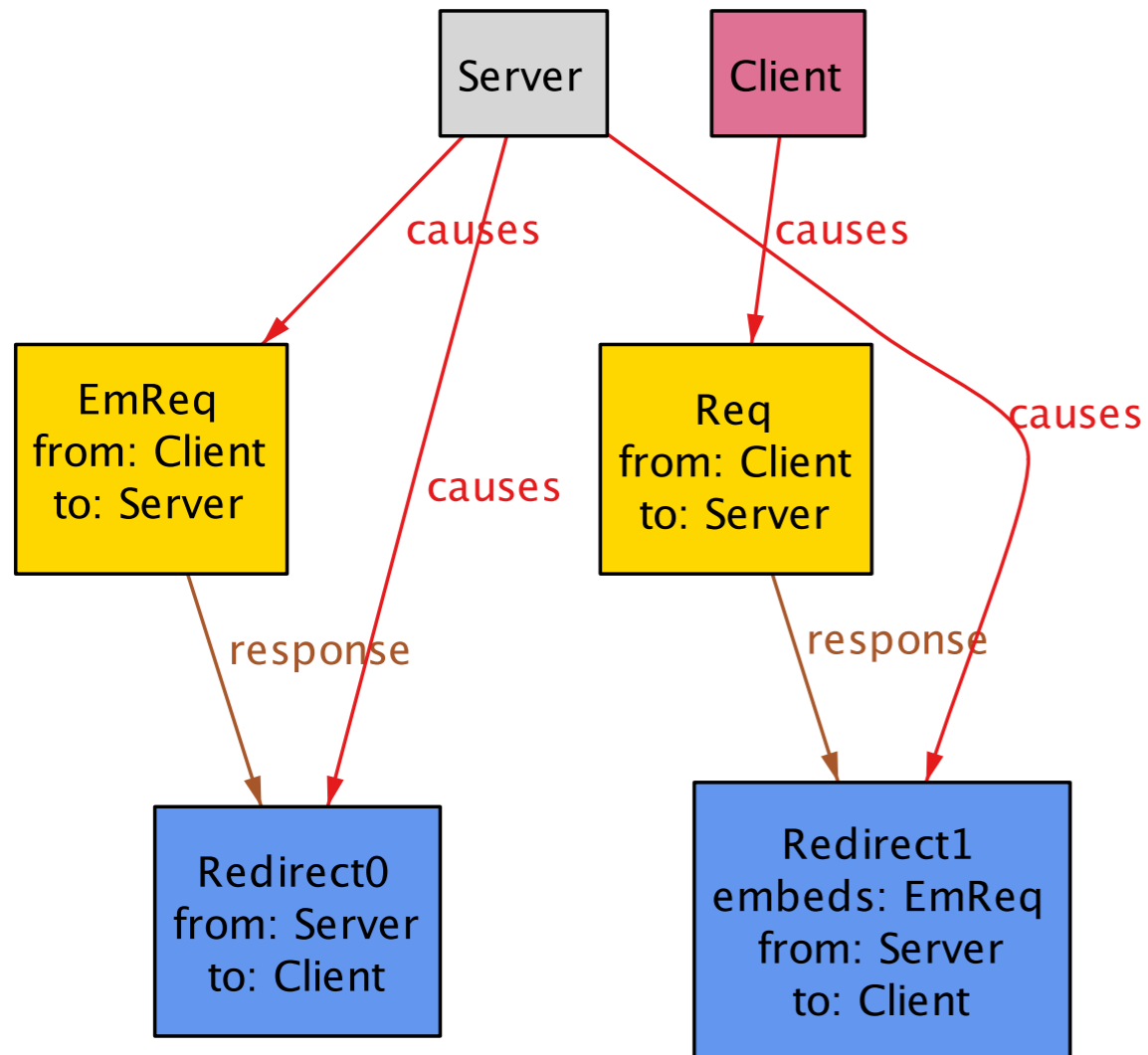
run {some Request and some Response}
```

# another instance



oops!

# adding timing



```
abstract sig HTTPEvent {  
  from, to: EndPoint  
  at: Time,  
  exists: set Time  
}
```

```
fact Timing {  
  all e: HTTPEvent {  
    e.exists = e.at + e.at.nexts  
    e.(embeds+response).at in e.at.nexts  
  }  
}
```

MIT OpenCourseWare  
<http://ocw.mit.edu>

6.170 Software Studio  
Spring 2013

For information about citing these materials or our Terms of Use, visit: <http://ocw.mit.edu/terms>.