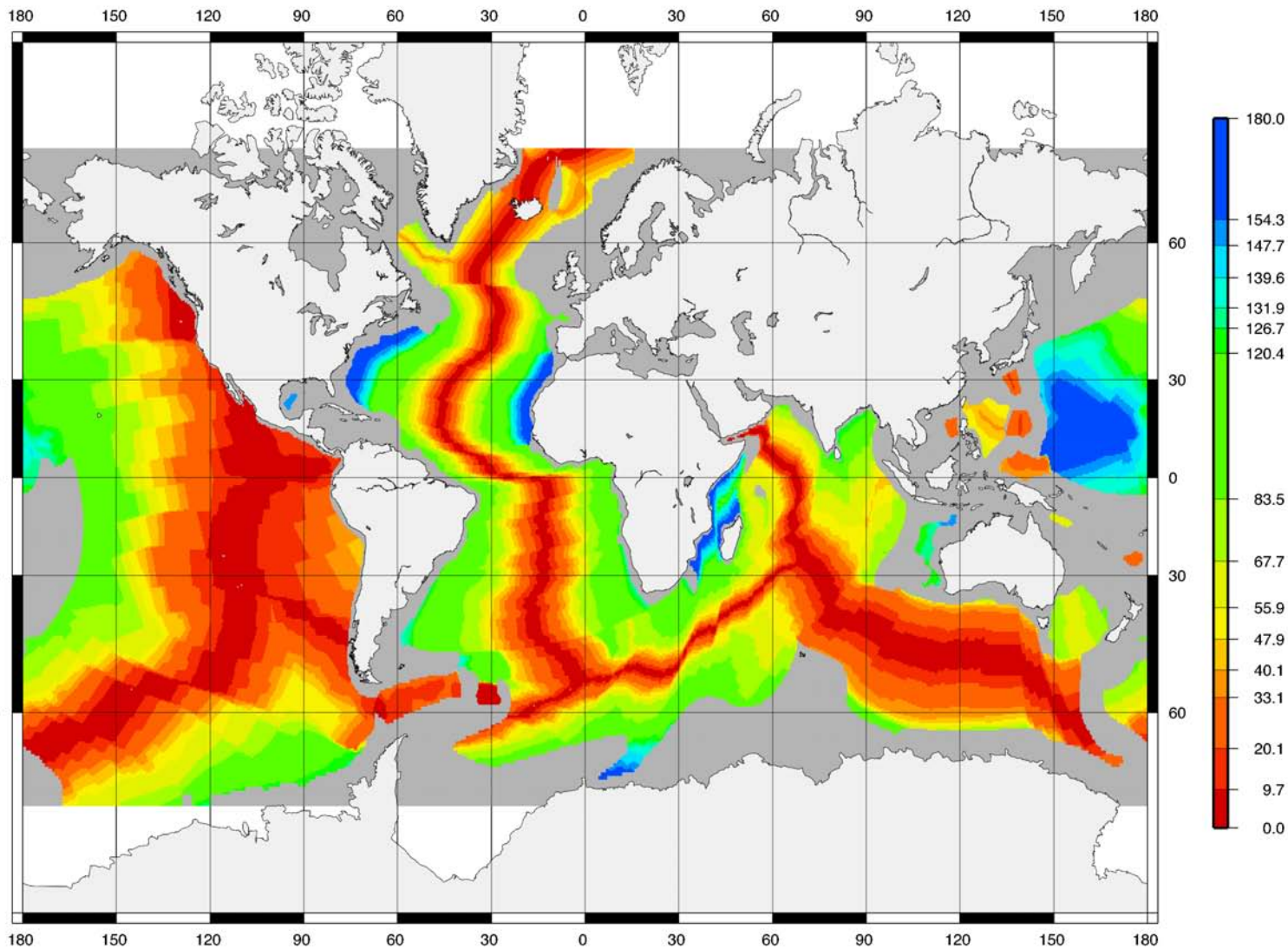


SCIENTIFIC SPECIALTY: GEOCRONOLOGY

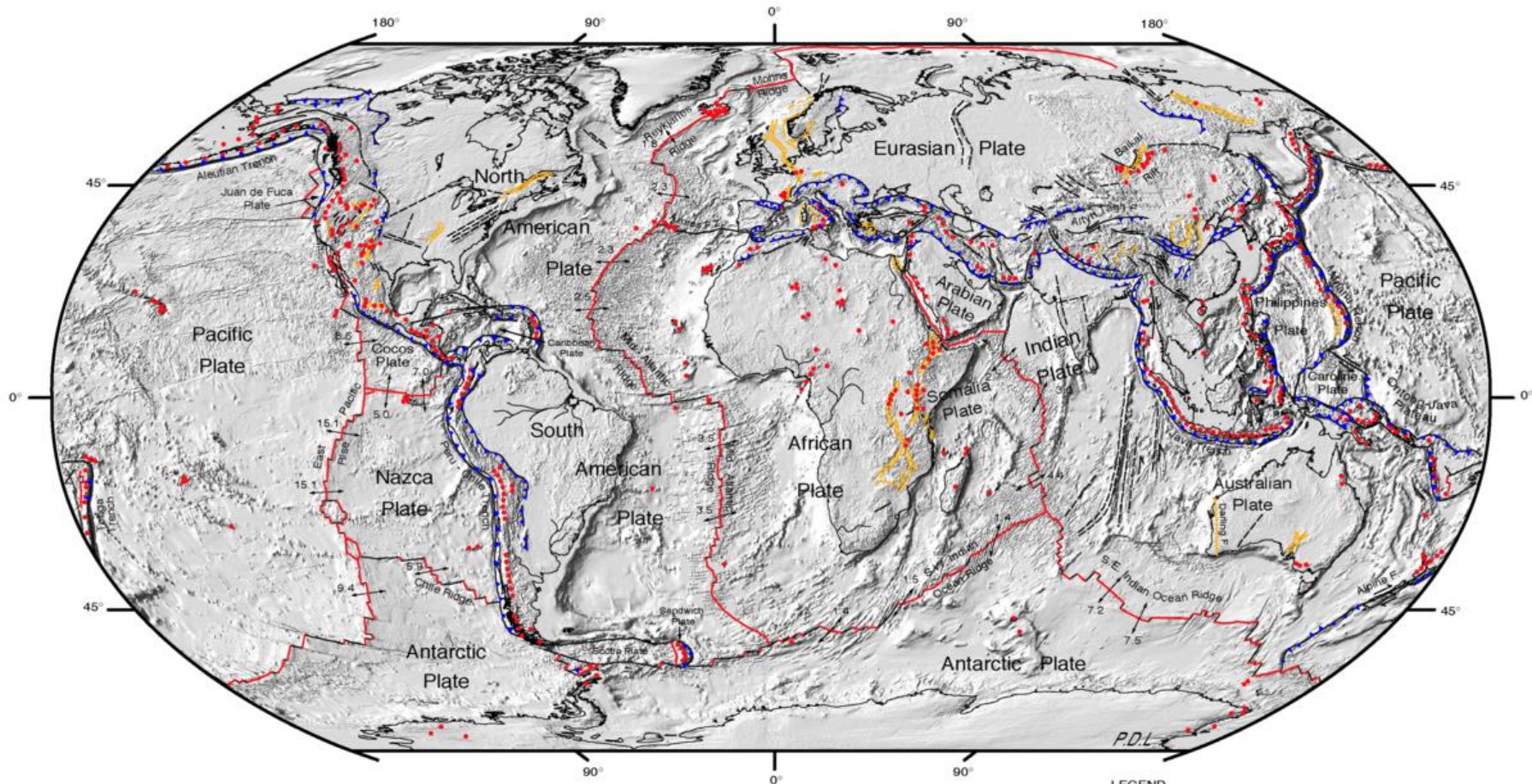
Seafloor age in millions of years

This map is from Dietmar Mueller, Univ. of Sydney

This map is part of "Discovering Plate Boundaries," a classroom exercise developed by Dale S. Sawyer at Rice University (dale@rice.edu). Additional information about this exercise can be found at <http://terra.rice.edu/plateboundary/>.



Source: [Discovering Plate Boundaries](#) by Dale S. Sawyer.



DIGITAL TECTONIC ACTIVITY MAP OF THE EARTH
Tectonism and Volcanism of the Last One Million Years

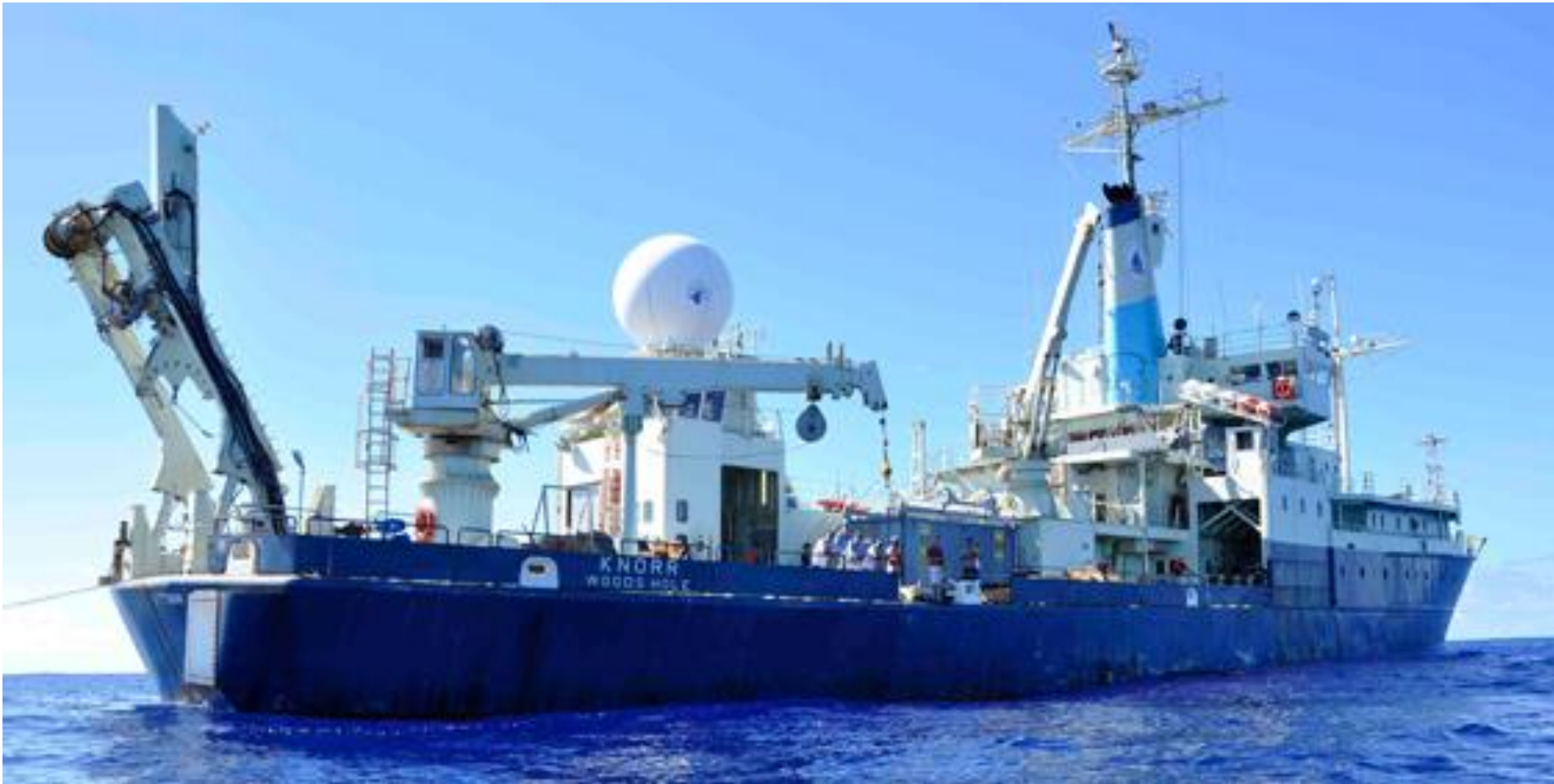
DTAM - 1



NASA/Goddard Space Flight Center
Greenbelt, Maryland 20771

Robinson Projection
October 2002

- LEGEND**
- Actively-spreading ridges and transform faults
 - Total spreading rate, cm/year
 - Major active fault or fault zone; dashed where nature, location, or activity uncertain
 - Normal fault or rift; hachures on downthrown side
 - Reverse fault (overthrust, subduction zones); generalized; bars on upthrown side
 - Volcanic centers active within the last one million years; generalized. Minor basaltic centers and seamounts omitted.



Courtesy of [NASA / Eric Lindstrom](#). Photograph in the public domain.



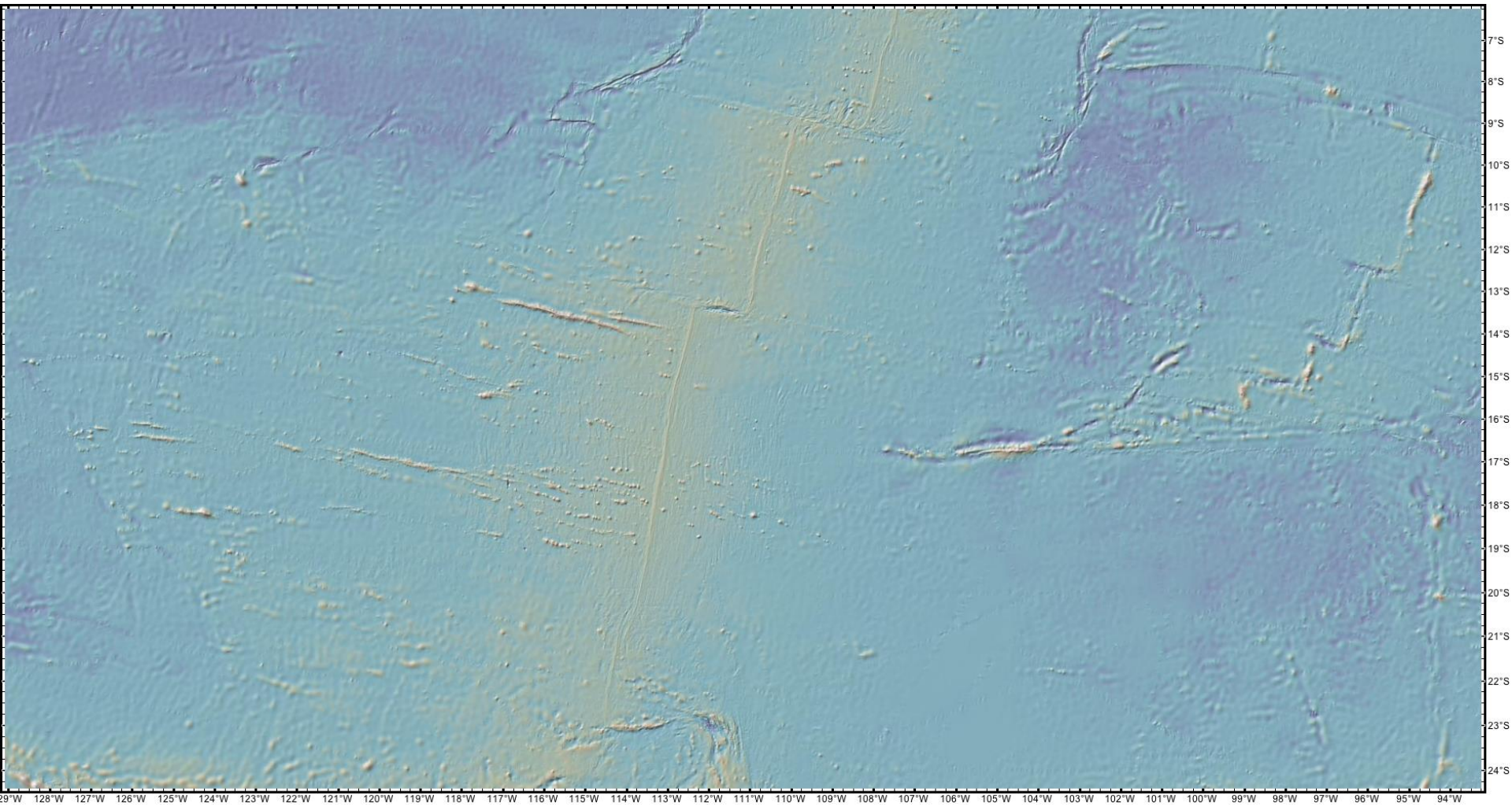
Courtesy of NASA. Image in the public domain.



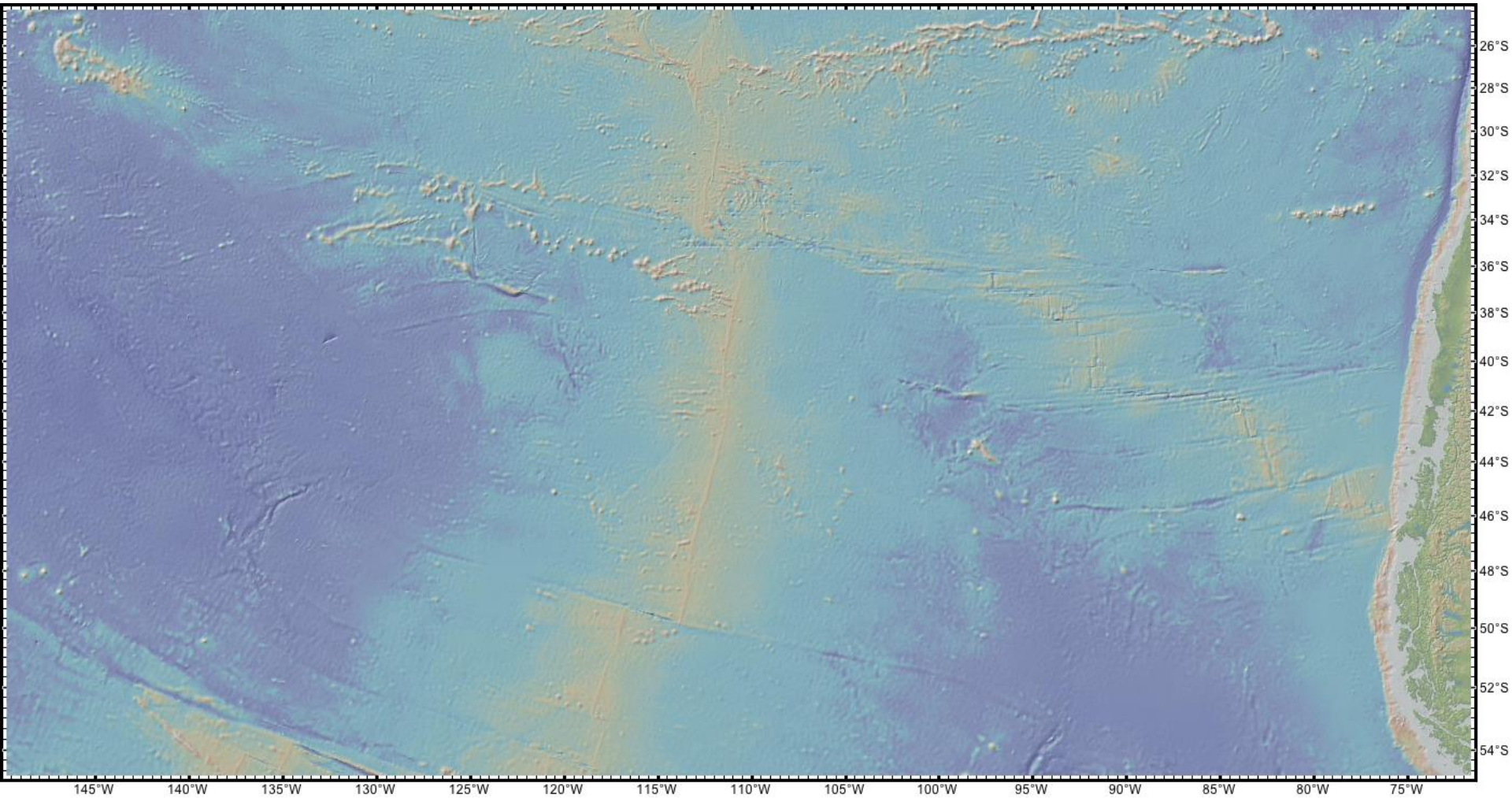
Courtesy of NASA. Image in the public domain.



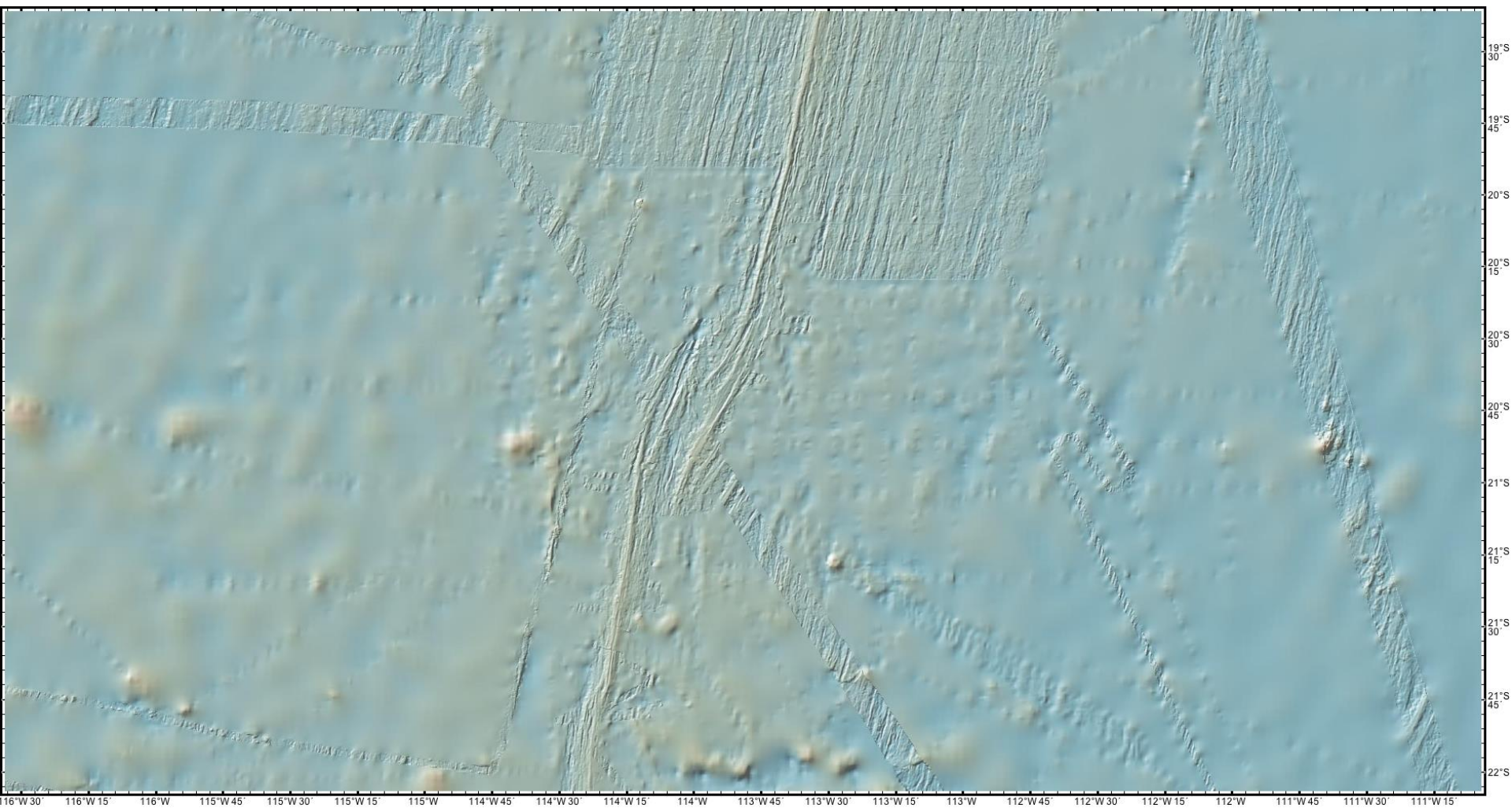
Courtesy of NASA. Image in the public domain.



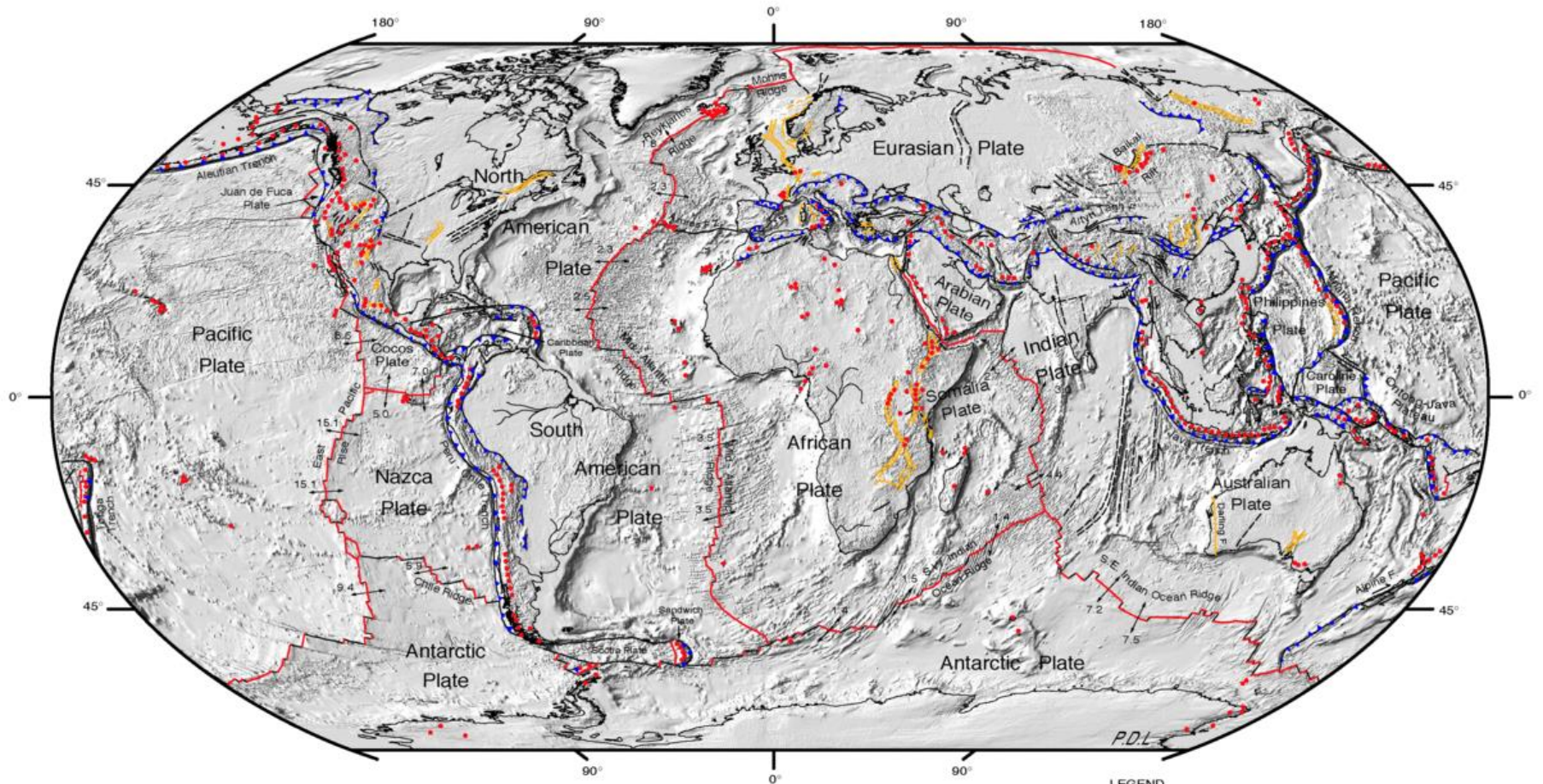
Courtesy of NASA. Image in the public domain.



Courtesy of NASA. Image in the public domain.



Courtesy of NASA. Image in the public domain.



DIGITAL TECTONIC ACTIVITY MAP OF THE EARTH
 Tectonism and Volcanism of the Last One Million Years

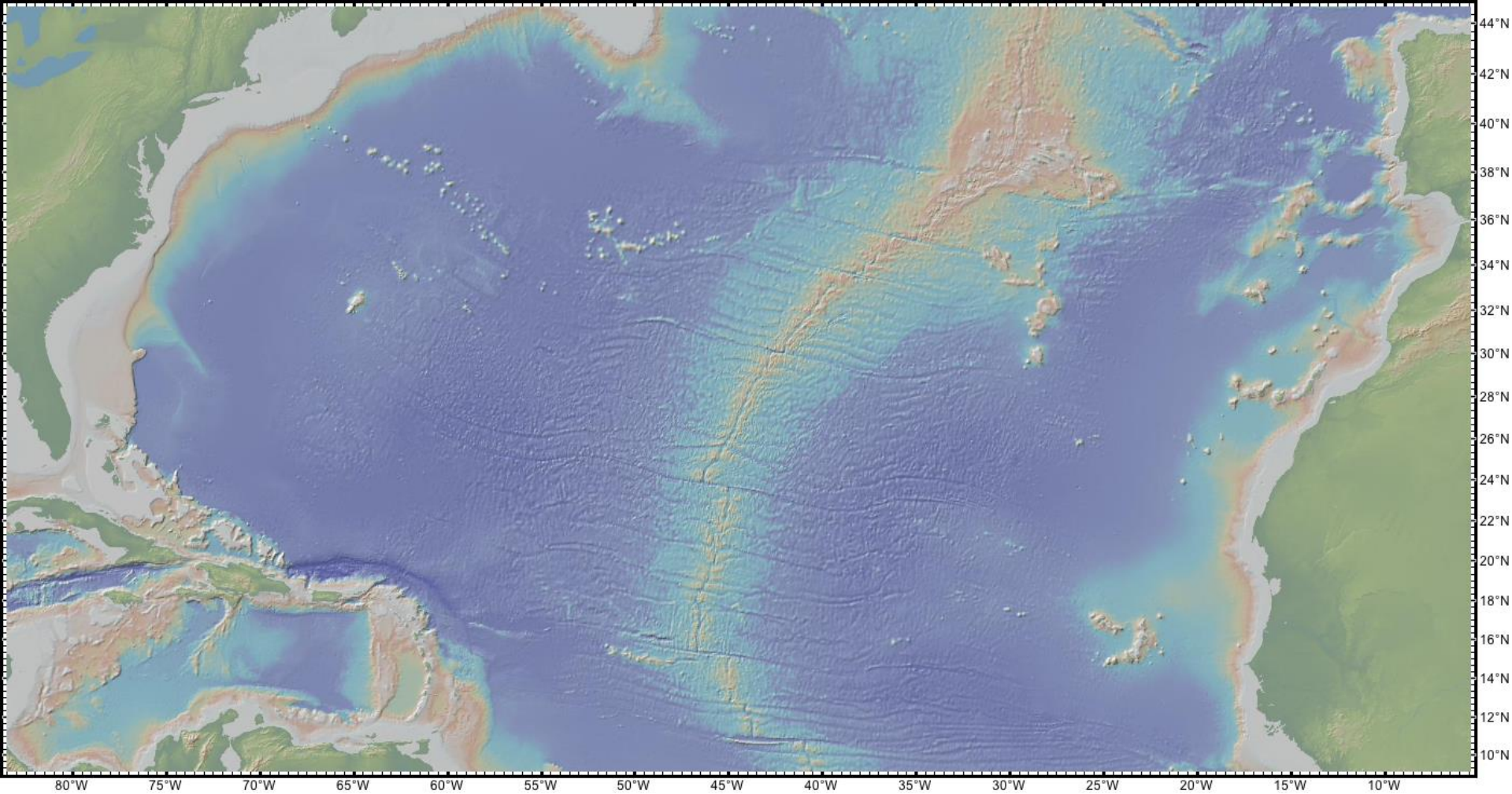
DTAM - 1



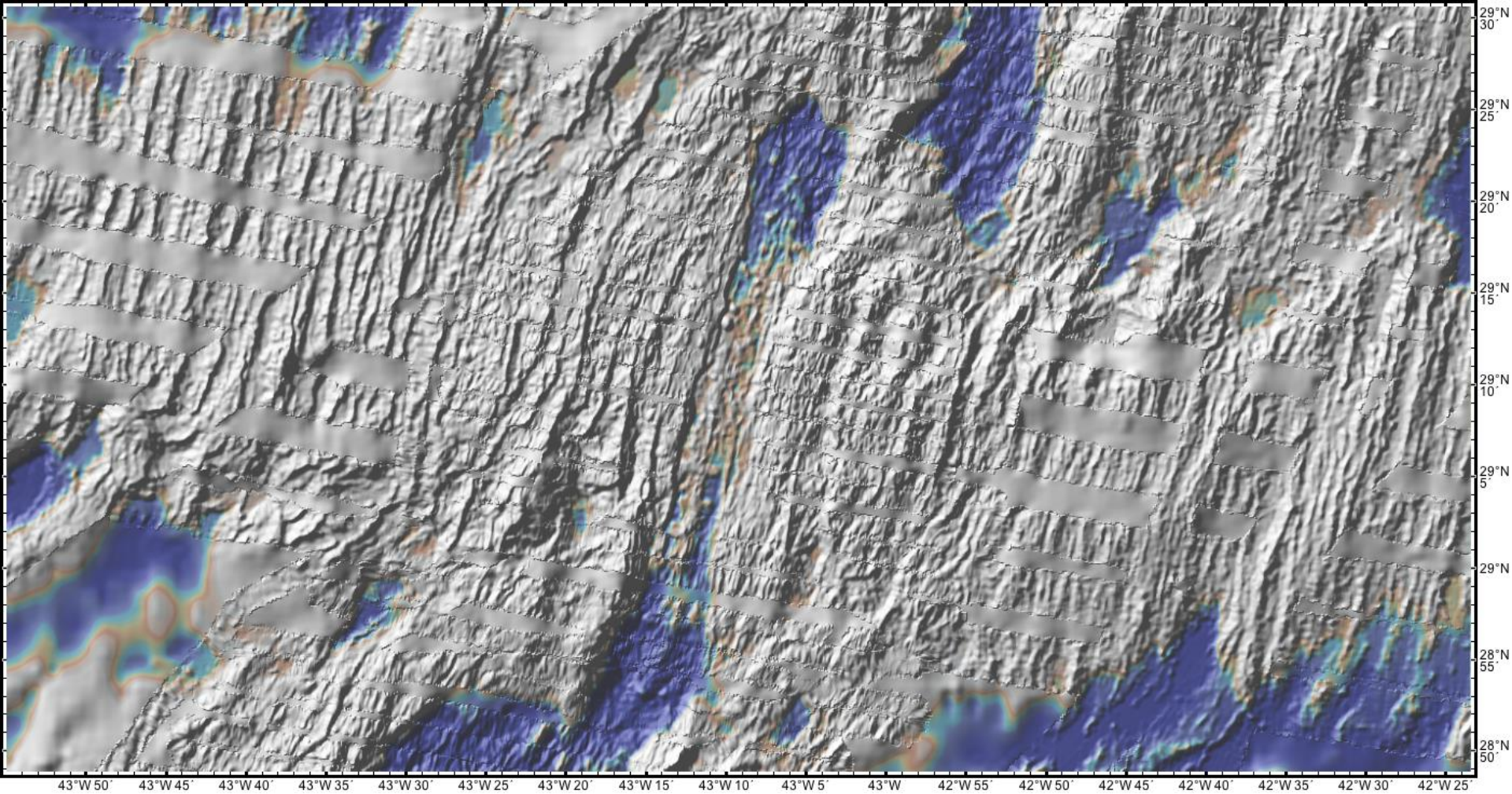
NASA/Goddard Space Flight Center
 Greenbelt, Maryland 20771

Robinson Projection
 October 2002

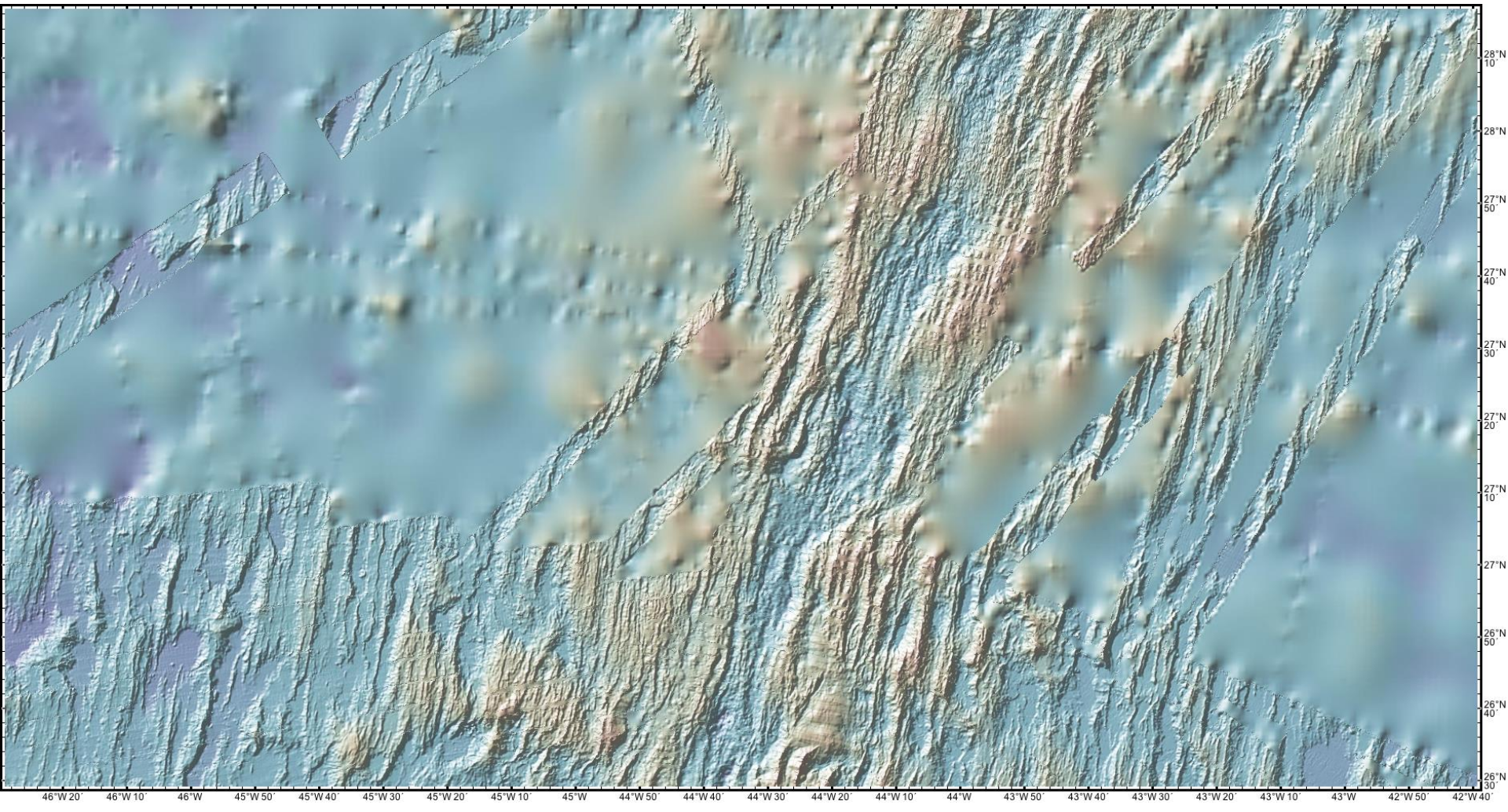
- LEGEND**
- Actively-spreading ridges and transform faults
 - Total spreading rate, cm/year
 - Major active fault or fault zone; dashed where nature, location, or activity uncertain
 - Normal fault or rift; hachures on downthrown side
 - Reverse fault (overthrust, subduction zones); generalized; bars on upthrown side
 - Volcanic centers active within the last one million years; generalized. Minor basaltic centers and seamounts omitted.



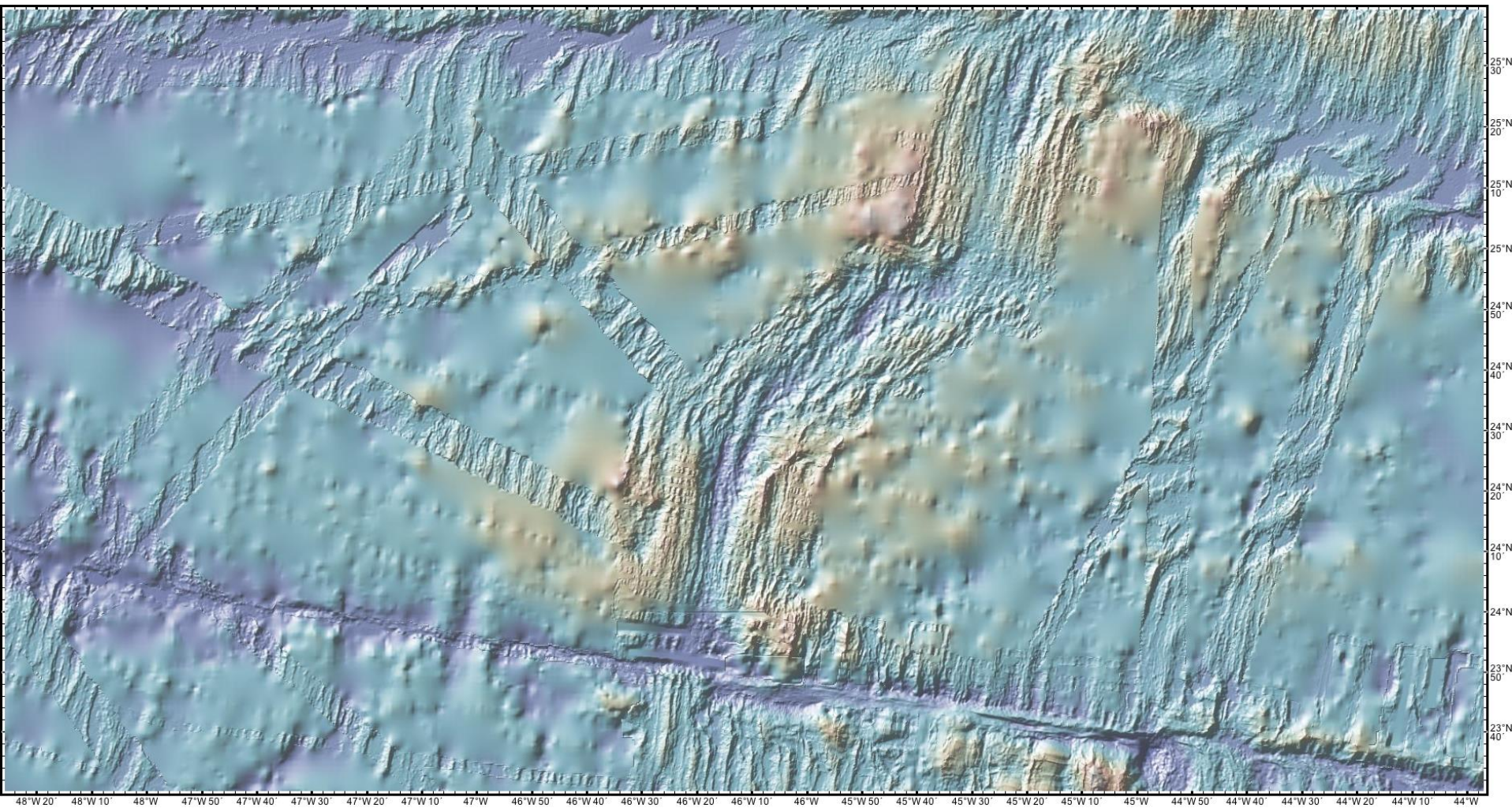
Courtesy of NASA. Image in the public domain.



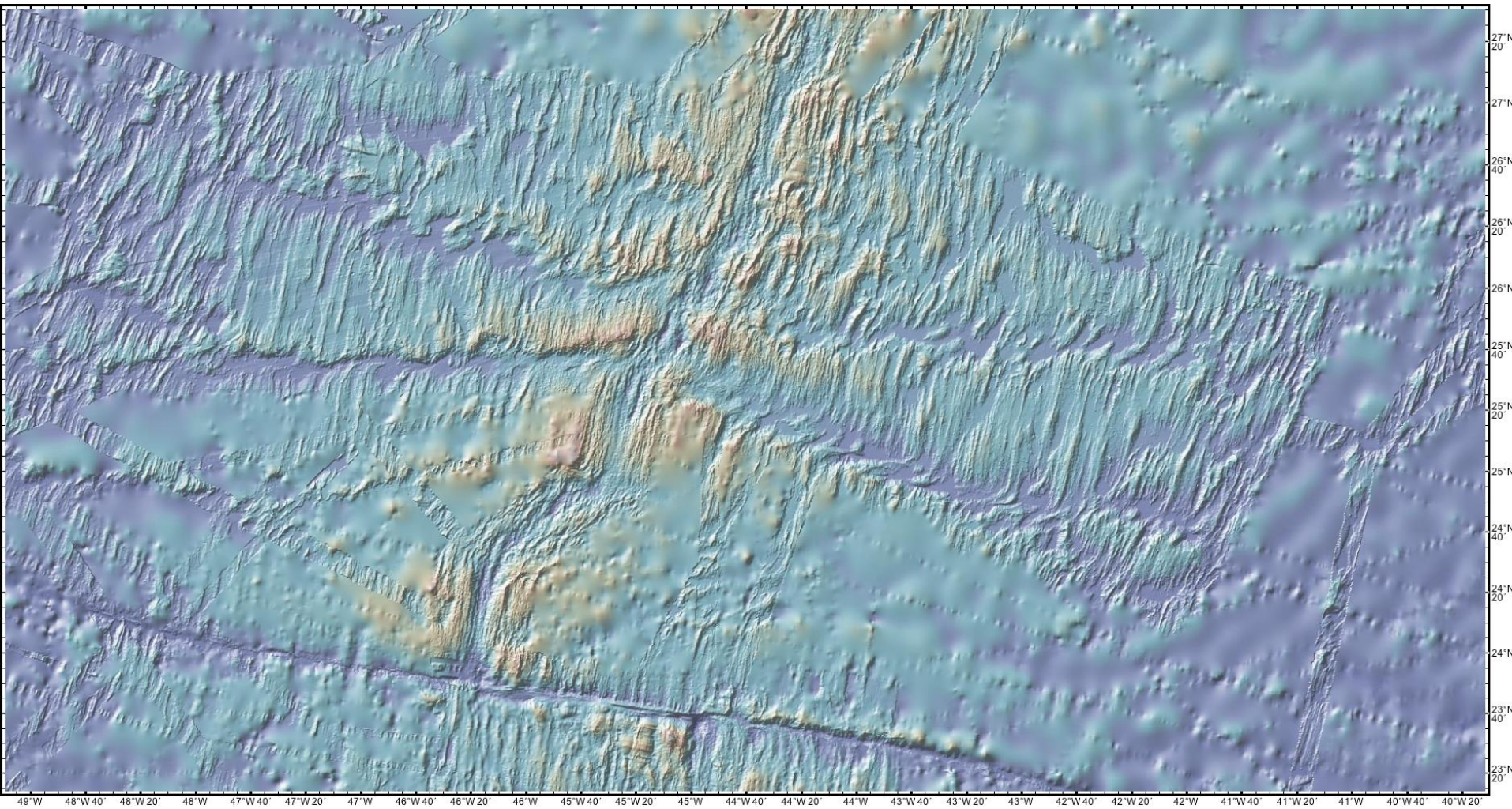
Courtesy of NASA. Image in the public domain.



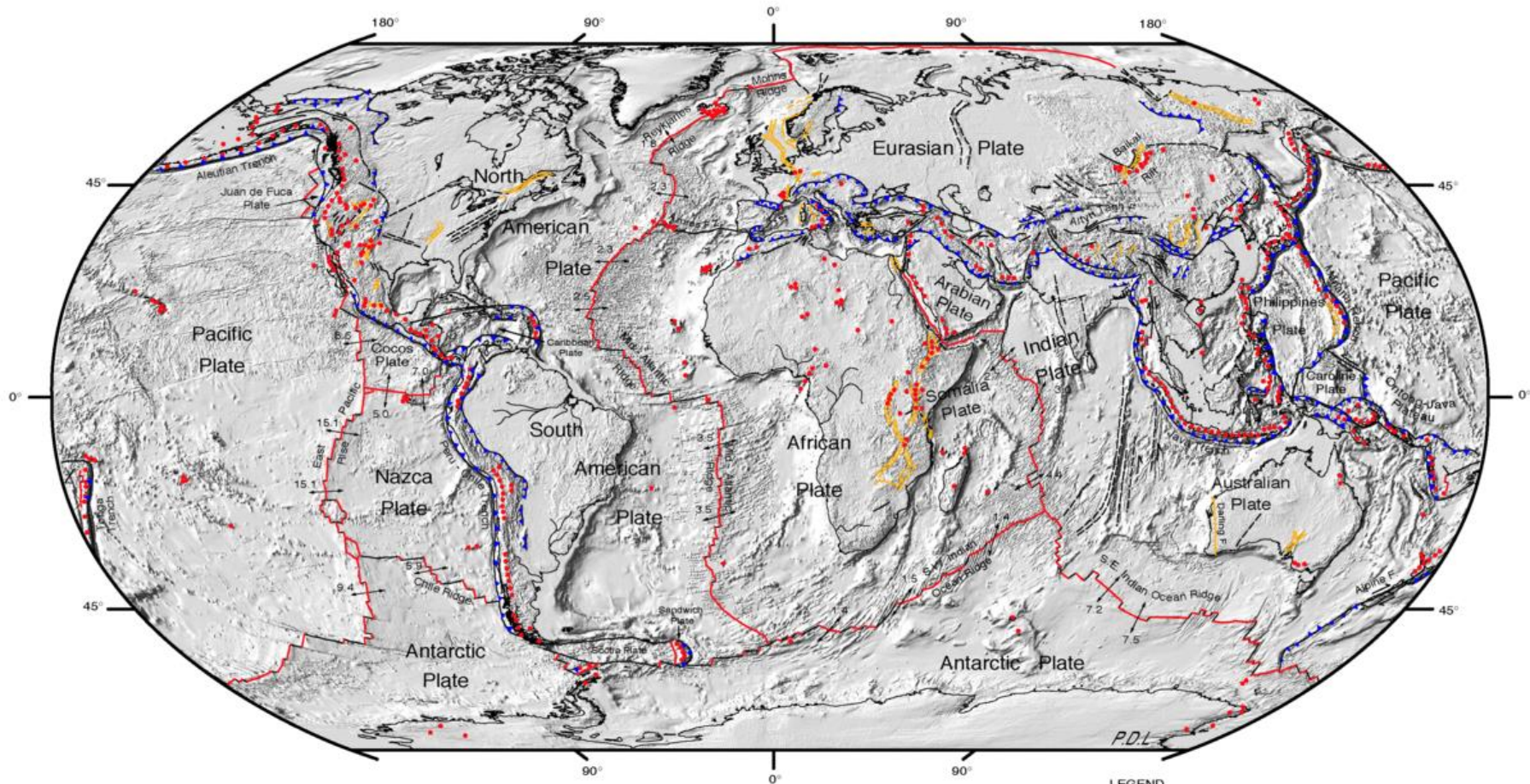
Courtesy of NASA. Image in the public domain.



Courtesy of NASA. Image in the public domain.



Courtesy of NASA. Image in the public domain.



DIGITAL TECTONIC ACTIVITY MAP OF THE EARTH
Tectonism and Volcanism of the Last One Million Years

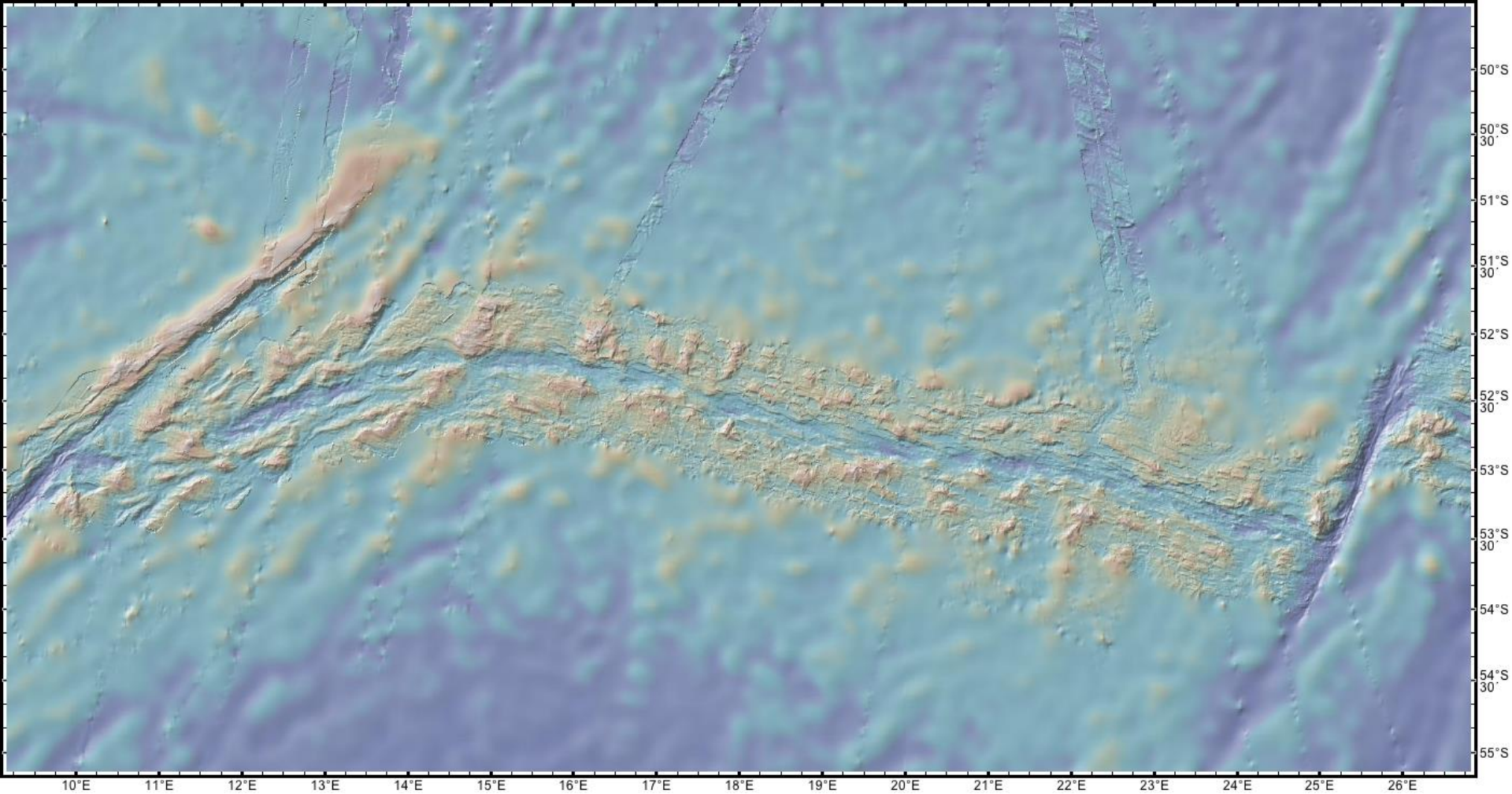
DTAM - 1



NASA/Goddard Space Flight Center
Greenbelt, Maryland 20771

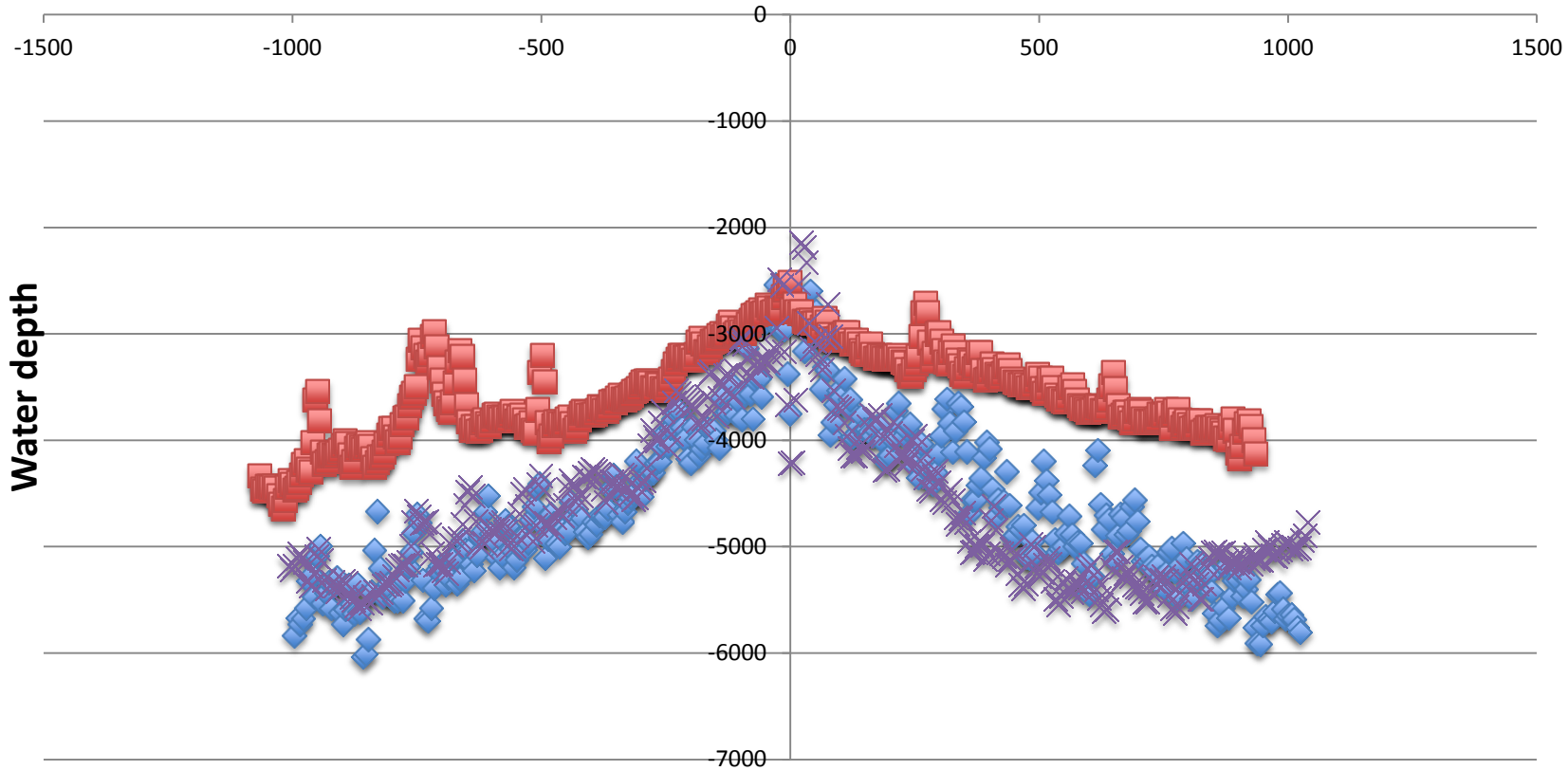
Robinson Projection
October 2002

- LEGEND**
- Actively-spreading ridges and transform faults
 - Total spreading rate, cm/year
 - Major active fault or fault zone; dashed where nature, location, or activity uncertain
 - Normal fault or rift; hachures on downthrown side
 - Reverse fault (overthrust, subduction zones); generalized; bars on upthrown side
 - Volcanic centers active within the last one million years; generalized. Minor basaltic centers and seamounts omitted.



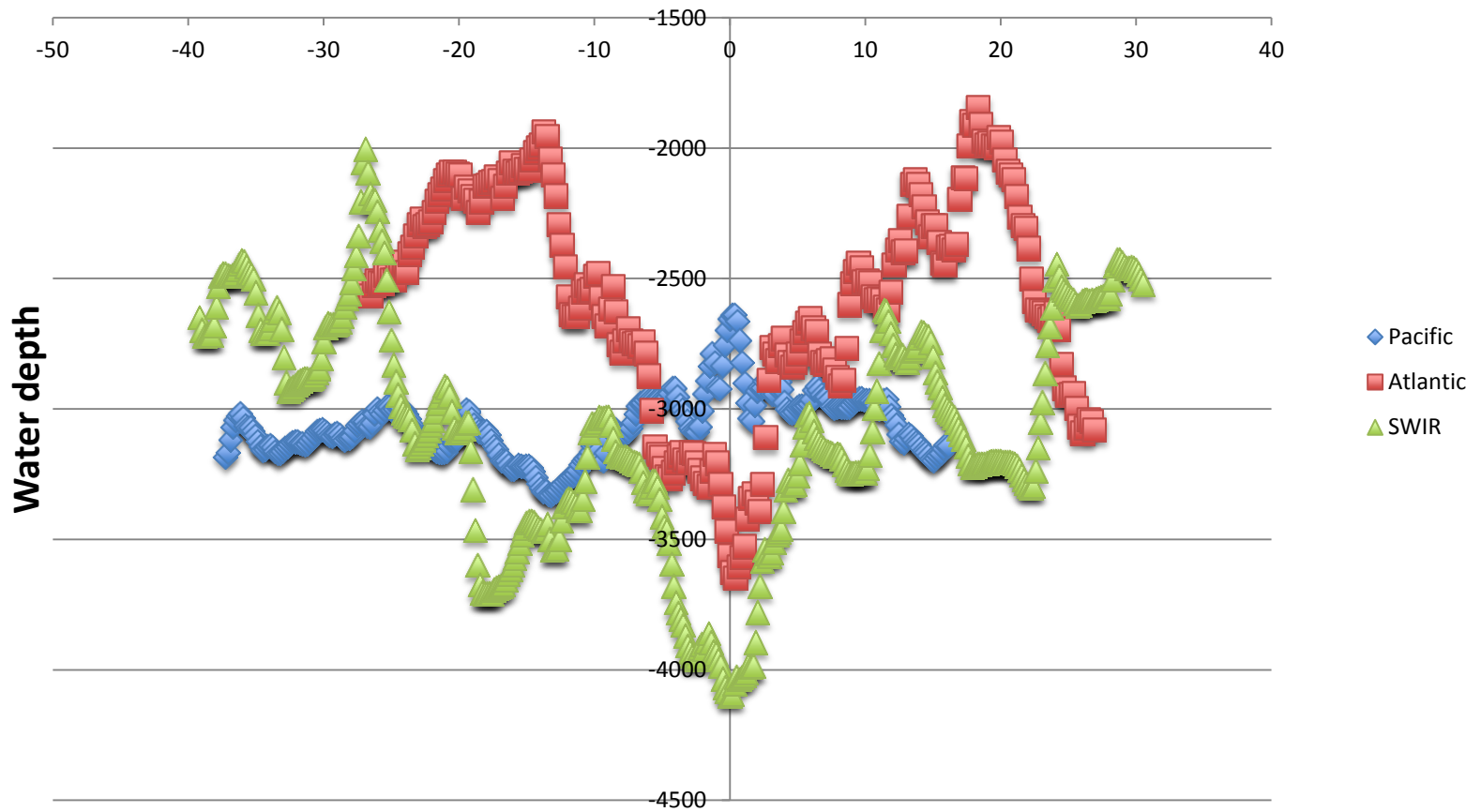
Courtesy of NASA. Image in the public domain.

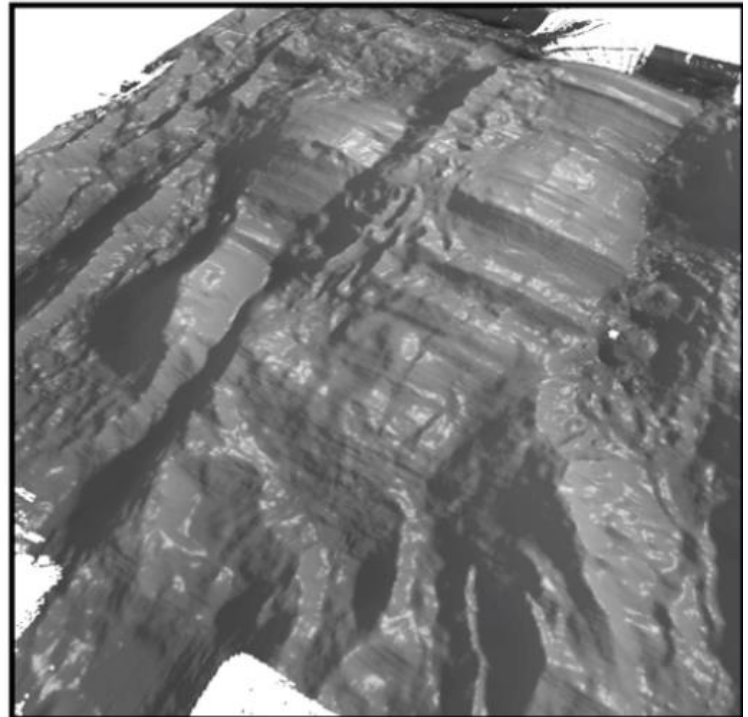
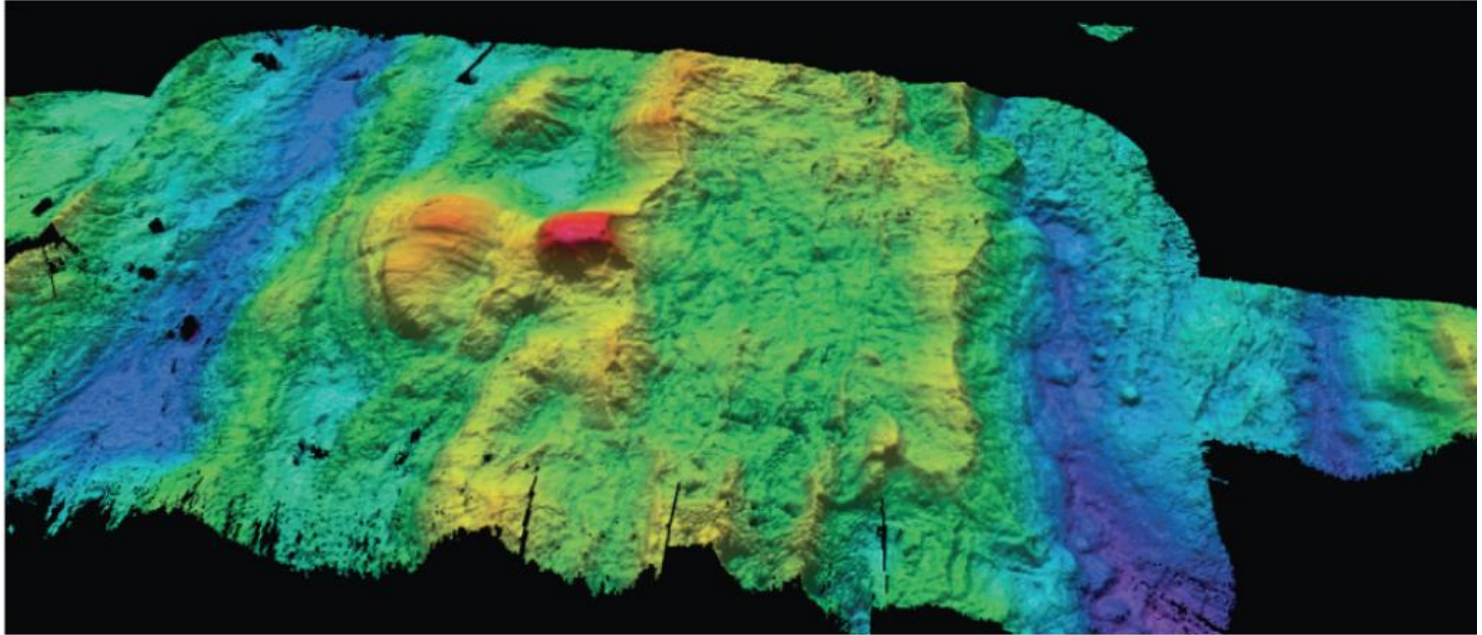
Distance from Ridge [km]



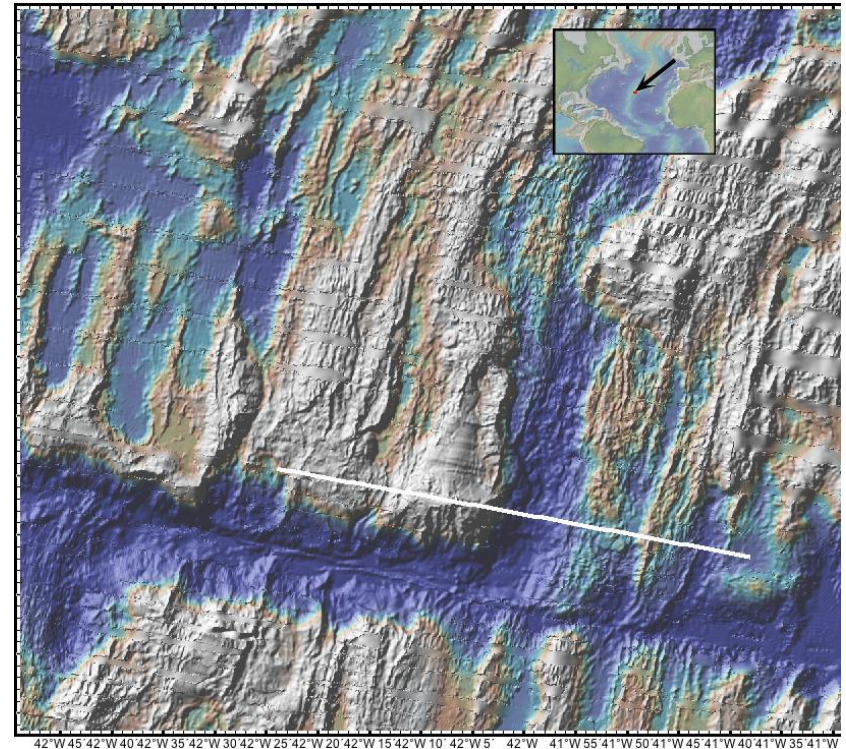
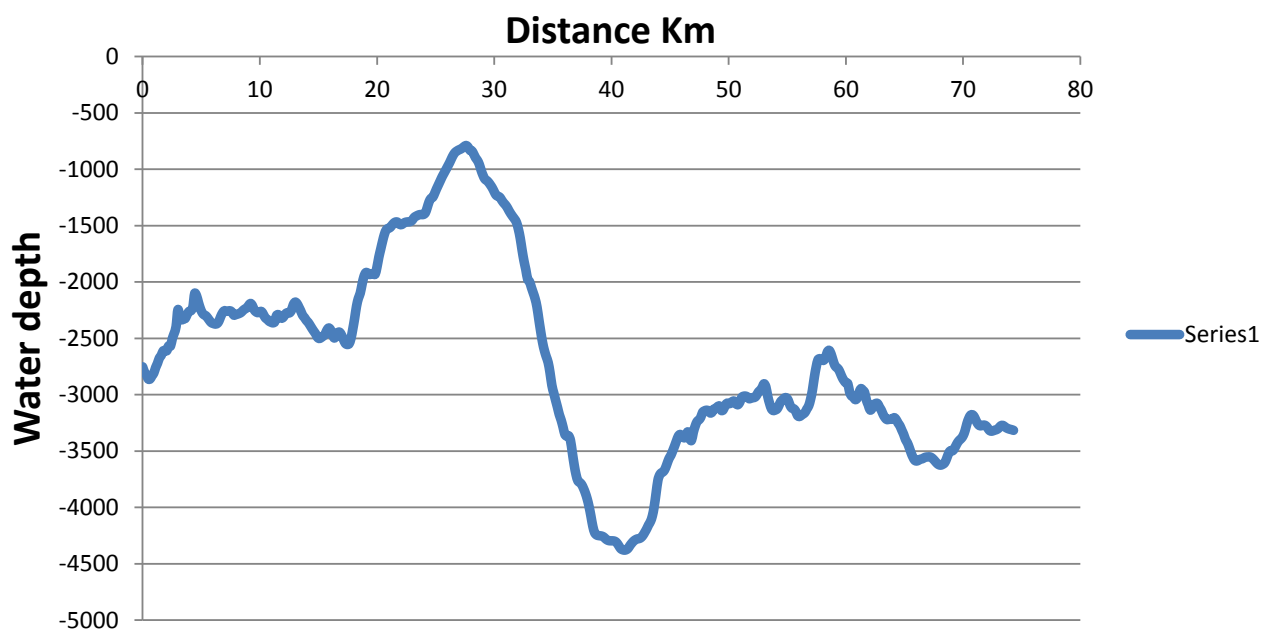
- ◆ ATLANTIC
- PACIFIC
- × SWIR

Distance from the ridge

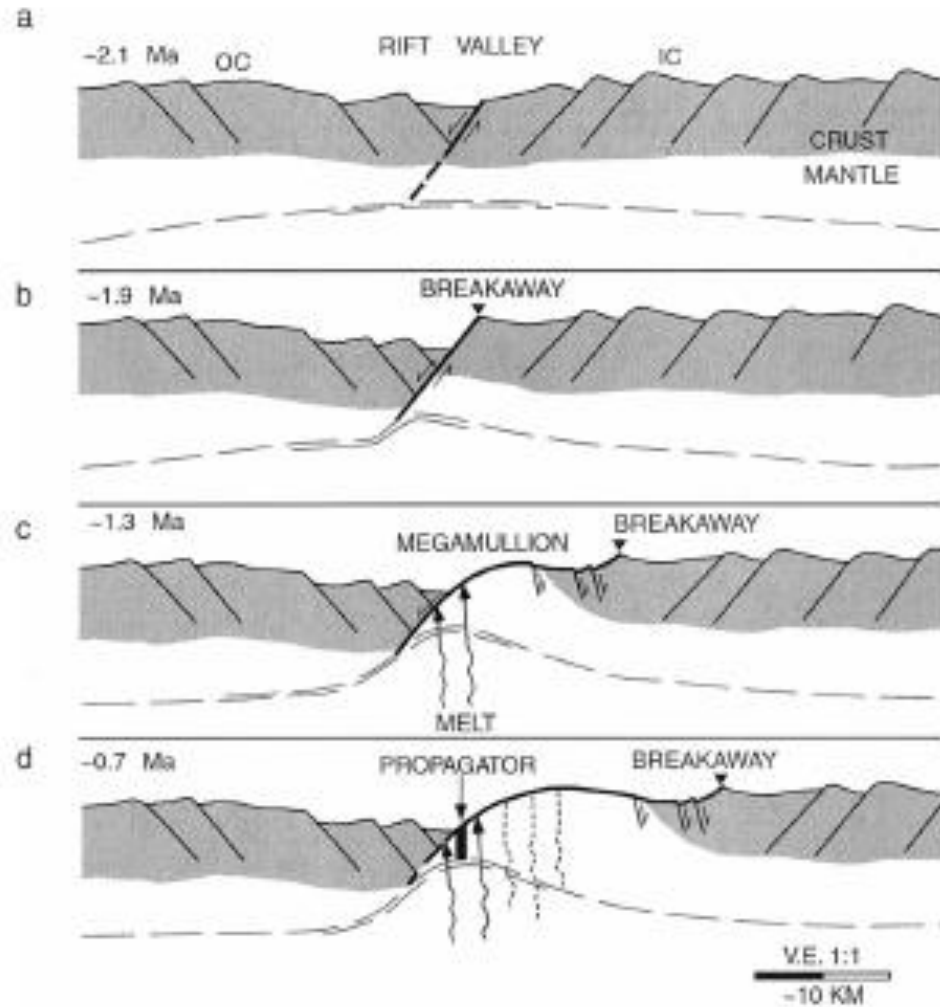




Courtesy of NASA. Image in the public domain.



Courtesy of NASA. Image in the public domain.



© American Geophysical Union. All rights reserved. This content is excluded from our Creative Commons license. For more information, see <http://ocw.mit.edu/help/faq-fair-use/>. Source: Tucholke, Brian E., Kantaro Fujioka, et al. "Submersible Study of an Oceanic Megamullion in the Central North Atlantic." *Journal of Geophysical Research: Solid Earth* 106, no. B8 (2001): 16145-61.

MIT OpenCourseWare
<http://ocw.mit.edu>

12.001 Introduction to Geology
Fall 2013

For information about citing these materials or our Terms of Use, visit: <http://ocw.mit.edu/terms>.